




Instruction Manual

My 1st Gift Set



91-003657-017 

VTech understands that a child's needs and abilities change as they grow and with that in mind we develop our toys to teach and entertain at just the right level...

vtech Baby

Toys that will stimulate their interest in different textures, sounds and colours

I am...

...responding to colours, sounds and textures

...understanding cause and effect

...learning to touch, reach, grasp, sit-up, crawl and toddle

Birth-36 months



Pre-School

Interactive toys to develop their imagination and encourage language development

I want...

...to get ready for school by starting to learn the alphabet and counting

...my learning to be as fun, easy and exciting as can be

...to show my creativity with drawing and music so my whole brain develops

3-6 years



Electronic Learning Computers

Cool, aspirational and inspiring computers for curriculum related learning

I need...

...challenging activities that can keep pace with my growing mind

...intelligent technology that adapts to my level of learning

...National Curriculum based content to support what I'm learning at school

4-10 years



To learn more about this and other VTech® products, visit www.vtech.co.uk

INTRODUCTION

My 1st Gift Set by VTech® is an ideal gift for little bundles of joy. The soft hippo teether, peek-a-boo mirror, rattle and electronic piano make the perfect on-the-go gift set for babies.

Off / Low Volume / High Volume Switch



3 Light Up
Piano Keys

INCLUDED IN THIS PACKAGE

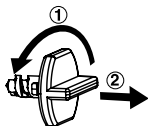
- One Electronic Piano
- One Flower Mirror
- One Frog Rattle
- One Hippo Teether
- One Instruction Manual

WARNING: All packing materials, such as tape, plastic sheets, packaging locks, removable tags, cable ties and packaging screws are not part of this toy and should be discarded for your child's safety.

NOTE: Please keep this Instruction Manual as it contains important information.

WARNING: Keep this soft toy out of the sleeping environment for babies under twelve months to avoid suffocation risk.

How to unlock the packaging locks:

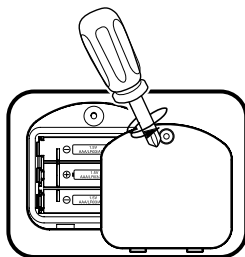


- ① Turn the packaging lock anticlockwise several times.
- ② Pull out and discard the packaging lock.

GETTING STARTED

BATTERY INSTALLATION

1. Make sure the unit is turned **Off**.
2. Locate the battery cover on the bottom of the electronic piano. Use a screwdriver to loosen the screw.
3. Install 3 new AAA (AM-4/LR03) batteries following the diagram inside the battery box. (The use of new alkaline batteries is recommended for maximum performance).
4. Replace the battery cover and tighten the screw to secure the battery cover.



BATTERY NOTICE

- Use new alkaline batteries or fully charged NI-MH (Nickel Metal-hydride) rechargeable batteries for best performance.
- Use only batteries of the same or equivalent type as recommended.
- Do not mix different types of batteries: alkaline, standard (carbon-zinc) or rechargeable or new and used batteries.
- Do not use damaged batteries.
- Insert batteries with the correct polarity.
- Do not short-circuit the battery terminals.
- Remove exhausted batteries from the toy.
- Remove batteries during long periods of non-use.
- Do not dispose of batteries in fire.
- Do not charge non-rechargeable batteries.
- Remove rechargeable batteries from the toy before charging (if removable).
- Rechargeable batteries are only to be charged under adult supervision.

WARNING:

Adult assembly required for battery installation.

Keep batteries out of reach of children.

Disposal of batteries and product



The crossed-out wheeled bin symbols on products and batteries, or on their respective packaging, indicates they must not be disposed of in domestic waste as they contain substances that can be damaging to the environment and human health.



The chemical symbols Hg, Cd or Pb, where marked, indicate that the battery contains more than the specified value of mercury (Hg), cadmium (Cd) or lead (Pb) set out in the Batteries and Accumulators Regulation.



The solid bar indicates that the product was placed on the market after 13th August, 2005.

Please dispose of your product and batteries responsibly.

In the UK, give this toy a second life by disposing of it at a small electricals collection point* so all of its materials can be recycled.

Learn more at:

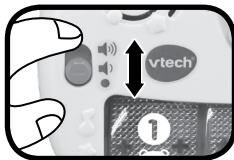
www.vtech.co.uk/recycle

www.vtech.com.au/sustainability

* Visit www.recyclenow.com to see a list of collection points near you.

PRODUCT FEATURES

1. To turn the piano **On**, slide the **Off / Low Volume / High Volume Switch** to the **Low Volume** (🔊) or the **High Volume** (🔊) position. To turn the piano **Off**, slide the **Off / Low Volume / High Volume Switch** to the **Off** (🔇) position.



2. Automatic Shut Off

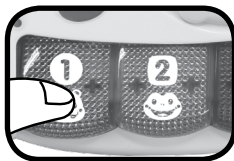
To preserve battery life, the piano will automatically power down after approximately 50 seconds without input. The unit can be turned on again by pressing any button.

NOTE: If the unit powers down while playing, we suggest changing the batteries.

ACTIVITIES

1. Light Up Piano Keys

Press the **Light Up Piano Keys** to learn about animals, numbers, colours, shapes and to hear playful songs and music. The lights will flash with the sounds.



SING-ALONG SONG LYRICS

Song 1

Tap on the piano,
Play a sweet song.
Hear the beautiful music,
You'll want to sing along.

Song 2

I'm a hippo, I'm friendly.
I've got a big tummy.
Twist me, turn me, tickle me.
I'm so much fun, you will see!

Song 3

Frog likes to hop, hop, hop!
He jumps in the water, splish splash!

Song 4

Smiley butterfly,
You flap your big strong wings.
Flap, flap, flap, flap.
Time to fly away!

MELODY LIST

1. Bingo
2. Animal Fair
3. Aba Daba Honeymoon
4. Teddy Bears' Picnic
5. Georgie Porgie
6. Froggy Went a Courtin'
7. Jack Be Nimble
8. One, Two, Buckle My Shoe
9. Pop! Goes the Weasel
10. Ding Dong Bell
11. Aiken Drum
12. Did You Ever See a Lassie?
13. Yankee Doodle
14. Three Little Kittens
15. Mary, Mary, Quite Contrary

CARE & MAINTENANCE

1. Keep the unit clean by wiping it with a slightly damp cloth.
2. Keep the unit out of direct sunlight and away from any direct heat sources.
3. Remove the batteries when the unit will not be in use for an extended period of time.
4. Do not drop the unit on a hard surface and do not expose the unit to excess moisture.

TROUBLESHOOTING

If for some reason the program/activity stops working or malfunctions, please follow these steps:

1. Please turn the unit **OFF**.
2. Interrupt the power supply by removing the batteries.
3. Let the unit sit for a few minutes, then replace the batteries.
4. Turn the unit **ON**. The unit should now be ready to play with again.
5. If the product still does not work, install a brand new set of batteries.

If the problem persists, please contact our Consumer Services Department and a service representative will be happy to help you.

CONSUMER SERVICES

Creating and developing **VTech®** products is accompanied by a responsibility that we at **VTech®** take very seriously. We make every effort to ensure the accuracy of the information, which forms the value of our products. However, errors sometimes can occur. It is important for you to know that we stand behind our products and encourage you to call our Consumer Services Department with any problems and/or suggestions that you might have. A service representative will be happy to help you.

UK Customers:

Phone: 0330 678 0149 (from UK) or +44 330 678 0149 (outside UK)

Website: www.vtech.co.uk/support

Australian Customers:

Phone: 1800 862 155

Website: support.vtech.com.au

NZ Customers:

Phone: 0800 400 785

Website: support.vtech.com.au

PRODUCT WARRANTY/ CONSUMER GUARANTEES

UK Customers:

Read our complete warranty policy online at vtech.co.uk/warranty.

Australian Customers:

VTECH ELECTRONICS (AUSTRALIA) PTY LIMITED – CONSUMER GUARANTEES

Under the Australian Consumer Law, a number of consumer guarantees apply to goods and services supplied by VTech Electronics (Australia) Pty Limited. Please refer to vtech.com.au/consumerguarantees for further information.



**Visit our website for more
information about our products,
downloads, resources and more.**

www.vtech.co.uk
www.vtech.com.au



TM & © 2019 VTech Holdings Limited.
All rights reserved.
Printed in China.
91-003657-017^{UK}